

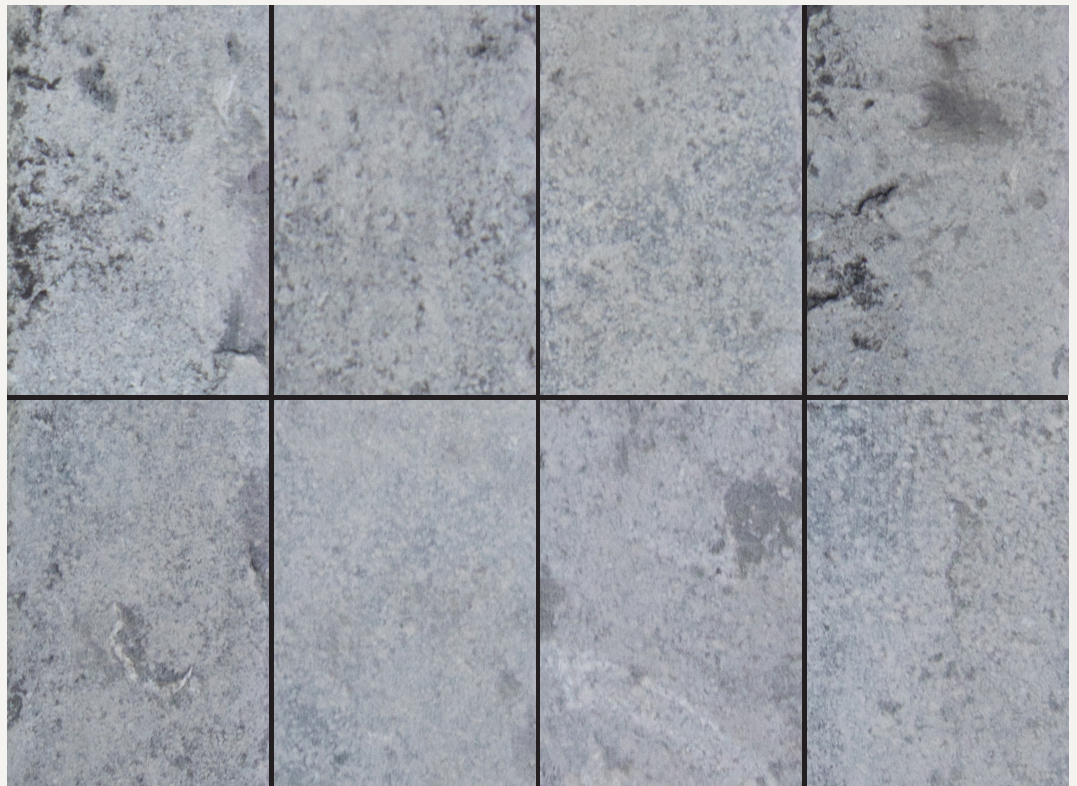
# Alexandria - *etched stackers*

## Egyptian Limestone

Fine grained Limestone. Durable building and paving stone.

### Technical data sheet

Please note - stone is a natural product and is subject to variation in colour, tone and texture. Below is a selection of photos showing typical variation we would expect from this stone type.



<b>Country of Origin</b>	Egypt	
<b>Quarry Location</b>	North Sinai, Egypt	
<b>Geological Type</b>	Limestone	
<b>Colour</b>	Dark Grey	
<b>Density</b>	2662kg/m <sup>3</sup>	
<b>Compression Strength</b>	20 200 psi	ASTM C 170 (DRY)
<b>Flexural Strength</b>	1600 psi	ASTM C 880 (DRY)
<b>Water Absorption</b>	0.26%	ASTM C 97
<b>Abrasion Resistance</b>	33.9 Ha	ASTM C 241 (DRY)



ALLGREEN

01935 415560  
sales@allgreen.uk  
www.allgreen.uk